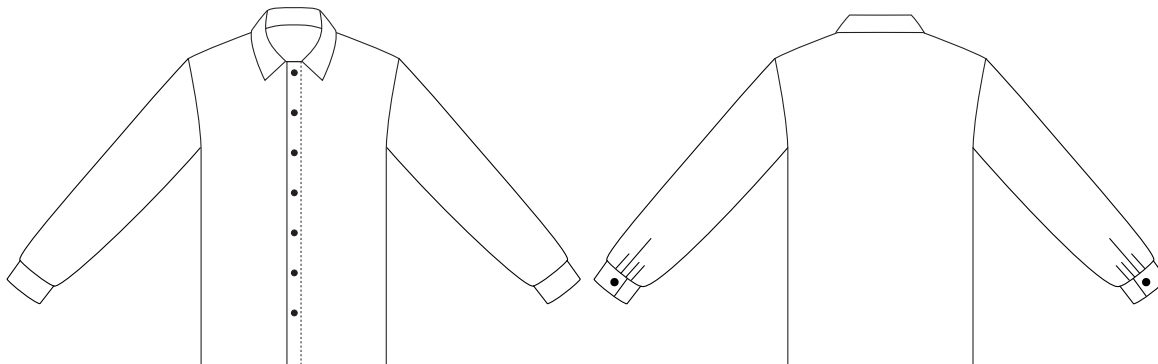


# I AM LUCIENNE

SEWING PATTERN / PATRON DE COUTURE



CLASSIC SHIRT SLEEVES VARIATION / VARIANTE MANCHES CHEMISIER

## 36/46

INTERMEDIATE / INTERMÉDIAIRE

# I AM

### FABRICS

#### RECOMMENDED FABRICS:

Batiste, poplin, thin denim, viscose, double gauze

#### FABRIC REQUIREMENTS:

Shirt: 2 1/4 yards by 55" wide

Tunic: 2 13/16" by 55" wide

Dress: 3 5/16" by 55" wide

### SUPPLIES

Fabric

Buttons of 1/2" to 5/8" diameter:

Shirt: 9 buttons

Tunic: 12 buttons

Dress: 14 buttons

### MEASUREMENT CHART

SIZES (inches)	36	38	40	42	44	46
BUST	32 1/4	33 3/8	35 1/2	37	38 1/2	40 1/8
WAIST	24 1/2	26	27 1/2	29 1/2	30 3/4	32 1/4
HIP	34 3/8	36 1/4	37 3/4	39 3/8	40 3/4	42 1/2

IAMPATTERNS.FR

# PREPARATION

**1** Wash and iron your fabric before cutting it. This is to avoid shrinking or dyeing surprises.

**2** Choose your size according to the measurement chart. Choose the size corresponding to the highest width. For example: If your waist and hip measurements are a size 38, and your bust a size 40, then choose the size 40. If your measurements fall between two sizes, choose the biggest size. For the metric system measurement chart, refer to the French instructions.

**3** For your convenience, the seam allowances are included in the pattern. It's more precise, and saves you precious time. Trace and cut the pattern following the lines which correspond to your size.

**4** Pin the pattern to the fabric as shown on the layout plan. Cut precisely following the edge of the pattern. Remember to clip the fabric to create the notches. Unless notified, all notches will be cut  $\frac{3}{16}$ ", which corresponds to half the seam allowance value.

Legend:

**5**



Right side of the fabric



Wrong side of the fabric

# ADVICE

When sewing, reinforce each seam with a back stitch at the beginning and at the end.

For best result, after each seam, cut the thread really close and iron the seam. Ironing all seams is the best advice we can give you to ensure a neater finish.

Find step by step visual instructions for most of our patterns on our journal at [iampatterns.fr](http://iampatterns.fr)

# FOLLOW US

Follow us on social media and once your garment is finished take a picture and share it with:

**@iam\_patterns**

#iampatterns

#IAMLUCIENNE

Ready for your next project? Get inspired and discover all our patterns at [iampatterns.fr](http://iampatterns.fr)

We wish you great sewing times.

Best from all of us,

The I AM team.

**I AM** [iampatterns.fr](http://iampatterns.fr)  
facebook.com/iampatterns  
instagram.com/iam\_patterns  
pinterest.com/iam\_patterns

# 1 Cutting the fabric

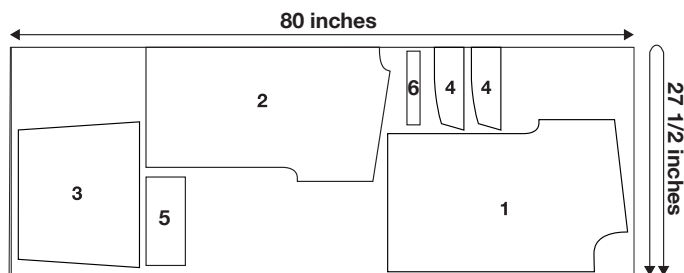
If you are planning on sewing the longer versions, lengthen the bottom of the back bodice and front bodice pieces by:

- 10" for the tunic version
- 18" for the dress version

Cut the fabric following the cutting layout. The cutting layout is the same for all three versions.

Make notches as indicated on the pattern as well as on the center backs of both the garment and the collar.

Iron-on the interfacing on the cuffs.



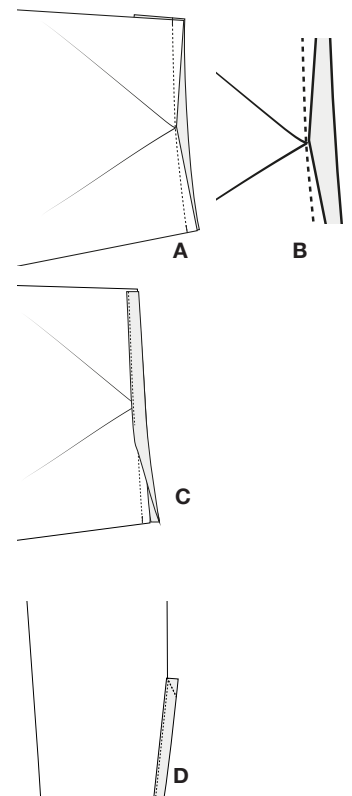
# 2 Creating the sleeve vents

At the bottom of each sleeve cut the slit as shown on the pattern. Place the slit wide open in a straight line. Pin the placket and the sleeve's slit right sides together. Sew at  $\frac{3}{8}$ " **(A)**. Make sure that when the seam reaches the tip of the slit there is only 1 mm of seam allowance **(B)**.

Iron the  $\frac{3}{8}$ " seam allowance of the free edge towards the inside of the placket. Looking at the wrong side of the garment, align this folded edge with the first seam. Pin in place. On the right side of the garment, make a topstitch at 2 mm along the placket **(C)**.

Place the plackets right sides together. Sew the top of the placket in diagonal to secure the opening **(D)**. Iron towards one side.

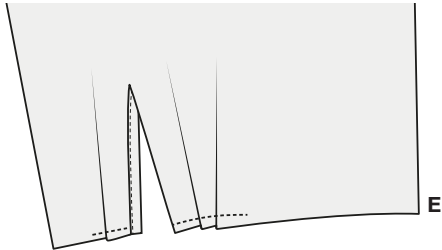
Follow step 1 to 5 on the I AM LUCIENNE instructions booklet to assemble the shirt. On step 6 only sew the button plackets, the buttons and the hem at the bottom of the shirt. Do not sew the hem at the cuffs.



# 3 Preparing the cuffs

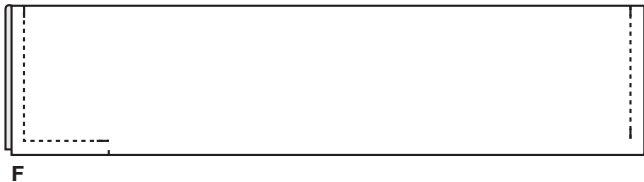
## CREATING THE PLEATS

At the bottom of each sleeve, fold the fabric matching up the pleat notches in order to create the three pleats. Pin in place. On the side where there are two pleats, fold the placket on the wrong side of the fabric and pin it. Sew at 3/16" to keep everything in place **(E)**.



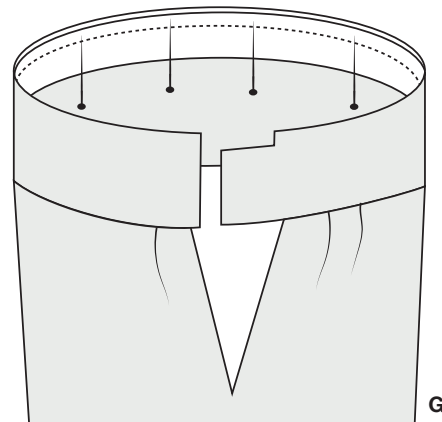
## PREPARING THE CUFFS

Fold the cuff in half lengthways with the right sides inwards. Sew one side at 3/8". Make sure to stop stitching 3/8" from the edge to leave the seam allowance free. Sew the other end of the cuff at 3/8" until the notch **(F)**. Turn inside out and iron. Follow the same instructions for the other cuff.

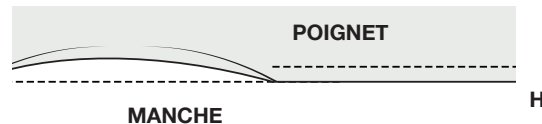


# 4 Sewing the cuffs

Place the cuff and the bottom of the sleeve right sides together. Make sure to match the opening of the sleeve with each side of the cuff. Pin one layer of the cuff with the sleeve. Leave the other layer free and sew at 3/8" **(G)**. Iron in order to place the seam allowance inside the cuff.

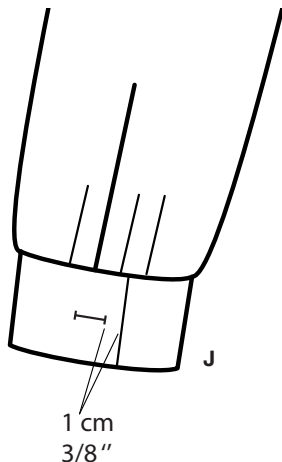


Iron the 3/8" seam allowance of the free edge towards the inside of the cuff. Looking at the wrong side of the garment, align this folded edge with the first seam. Pin in place. On the right side of the garment, make a topstitch at 2 mm along the cuff **(H)**.



# 5 Finishing

Make the buttonhole on each cuff. Start sewing the buttonhole 3/8" away from the edge of the placket and centered heightwise **(J)**.



Sew all the buttons matching up the buttonholes.

# 6 Notes